



Tapes & Specialties



# INDUSTRIAL DIVISION

Pro Tapes & Specialties, Inc.<sup>®</sup> offers a large selection of pressure sensitive tape solutions for a variety of industrial applications.



## Table of Contents

### **Industrial Grade Cloth & Duct Tapes**

<b>Pro® Duct 100 Economy Tape</b> .....	1
<b>Pro® Duct 110 General Purpose Tape</b> .....	1
<b>Pro® Duct 120 Industrial Grade Tape</b> .....	1
<b>Pro® Duct 139 Specialty Grade Tape</b> .....	1
<b>Pro® 130 Premium Grade Duct Tape</b> .....	2
<b>Pro® 132 Heavy-Duty Grade Duct Tape</b> .....	2
<b>Pro® 140 Polyester Cotton Cloth</b> .....	2
<b>Pro® 160 Transparent Duct Tape</b> .....	2
<b>Pro Gaff® Matte Cloth Tape</b> .....	3
<b>Pro® Pocket Gaff Retail Pack</b> .....	3
<b>Pro® Pocket Cool Camo Gaff</b> .....	4
<b>Pro® Camo Gaff Tape Camouflage Matte Cloth Tape</b> .....	4
<b>Pro® Gaff Glow</b> .....	4

### **Packaging Tapes**

<b>Pro® 167 Filament Tape</b> .....	5
<b>Pro® 180 Filament Tape</b> .....	5
<b>Pro® 183 Kraft Paper Tape</b> .....	5
<b>Pro® 184HD Heavy-Duty Kraft Paper Tape</b> .....	5
<b>Pro® 185 Flatback Paper Tape</b> .....	6
<b>Pro® 188 Tensilized Polypropylene Tape</b> .....	6
<b>Pro® 919 Heavy-Duty Carton Sealing Tape</b> .....	6
<b>Pro® 929 Heavy-Duty Polyester Carton Sealing Tape</b> .....	6
<b>Pro® Seal 300 Carton Sealing Tape</b> .....	7
<b>Pro® Seal 300AC Carton Sealing Tape</b> .....	7
<b>Pro® 700 Tamper Evident Tape</b> .....	7

### **Masking/Paper Tapes**

<b>Pro® Artist Tape Flatback Paper Tape</b> .....	8
<b>Pro® 46 Colored Crepe Tape</b> .....	8
<b>Pro® 785 Contractor Grade Masking Tape</b> .....	8
<b>Pro® 795 General Purpose Masking Tape</b> .....	8
<b>Pro® Drafting Economy Masking Tape</b> .....	9
<b>Pro® 4000 Paper Application Tape</b> .....	9
<b>Pro® 708 8-Day Painter's Tape</b> .....	9
<b>Pro® Scenic 714 Blue Mask 14-Day Painter's Tape</b> .....	9

<b>UGlu®</b> .....	10-11
--------------------	-------

### **Double Coated Tapes**

<b>Pro® 400 Double Coated Paper Tape</b> .....	12
<b>Pro® 406 Double Coated Polyester Tape</b> .....	12
<b>Pro® 408 Double Coated Polyester Tape</b> .....	12
<b>Pro® 410 Double Coated Non-Woven Tape</b> .....	12
<b>Pro® 500B Double Coated Non-Woven Tape</b> .....	13
<b>Pro® 965 Double Coated Tape</b> .....	13
<b>Pro® 970 Double Coated Tape</b> .....	13
<b>Pro® 3008 Double Coated Tape</b> .....	13
<b>Pro® 3016 Double Coated Foam Tape</b> .....	14
<b>Pro® 3032 Double Coated Foam Tape</b> .....	14
<b>Pro® 3008A Acrylic Double Coated Foam Tape</b> .....	14
<b>Pro® 3016A Acrylic Double Coated Foam Tape</b> .....	14
<b>Pro® 3032A Acrylic Double Coated Foam Tape</b> .....	15

<b>Pro® 155 2 Mil Adhesive Transfer Tape</b> .....	15
<b>Pro® 156 5 Mil Adhesive Transfer Tape</b> .....	15
<b>Pro® Net 10 Micro Scrim Tape</b> .....	15
<b>Pro® 5110G Extreme High Bond Tape</b> .....	16
<b>Pro® 5100C Extreme High Bond Tape</b> .....	16
<b>Pro® 5110W Extreme High Bond Tape</b> .....	16
<b>Pro® 5050C Extreme High Bond Tape</b> .....	16

**Double Coated Adhesive Transfer Tapes & Dispensers**

<b>Pro® 154 ATG 2 Mil Reverse Wound Adhesive Transfer Tape</b> .....	17
<b>Pro® ATG HD Dispenser</b> .....	17

**Butyl Tapes**

<b>Pro® 150 High Performance Butyl Duct</b> .....	18
<b>Pro® Flex Patch &amp; Shield Butyl Tape</b> .....	18
<b>Pro® 248 Double Sided Butyl Tape</b> .....	18

**Foil & Electrical Tapes**

<b>Pro® Friction Abrasion Protection Tape</b> .....	19
<b>Pro® 603 Pipe Wrap Tape</b> .....	19
<b>Pro® 804L Aluminum Foil Tape</b> .....	19
<b>Pro® 808L Aluminum Foil Tape</b> .....	19
<b>Pro® 882L Copper Foil Tape</b> .....	20
<b>Pro® 730 Glass Cloth Tape</b> .....	20
<b>Pro® 950 Kapton Polyimide Tape</b> .....	20
<b>Pro® 950AS Anti-Static Kapton Polyimide Tape</b> .....	20
<b>Pro® 960 Polyester Film Tape</b> .....	21
<b>Pro® 980 Polyester Film Tape</b> .....	21
<b>Pro® 981 Polyester Film Tape</b> .....	21
<b>Pro® Plus Electrical Tape</b> .....	22
<b>Pro® P-28 Boxed Electrical Tape</b> .....	22
<b>Pro® PTFE Teflon Pipe Thread Seal Tape</b> .....	22

**Safety Tapes**

<b>Pro® 48 Safety Stripes Vinyl Safety Stripes Tape</b> .....	23
<b>Pro® HD Safety Stripes Vinyl Lane Marking Tape</b> .....	23
<b>Pro® 50 Premium Vinyl Tape</b> .....	23
<b>Pro® Lite 36 Reflective Film Tape</b> .....	23
<b>Pro® Caution Ribbon Non-adhesive Tape</b> .....	24
<b>Pro® 15 Non-Skid Grit Tape</b> .....	24
<b>Pro® 17 Vinyl Anti-Skid Tape</b> .....	24
<b>Pro® Grit Safety Stripes Non-Skid Grit Tape</b> .....	24
<b>Pro® Glow Glow-In-The-Dark Tape</b> .....	25
<b>Pro® Glow Stripes Lane Marking Tape</b> .....	25
<b>Pro® Glow Arrows, Dots, &amp; Corners</b> .....	25
<b>Pro® Glow Grit Non-Skid Grit Tape</b> .....	25

**Specialty Tapes**

<b>Pro® Fast Hook &amp; Loop Tape</b> .....	26
<b>Pro® Sheen Metalized Film Tape</b> .....	26
<b>Pro® Rollerwrap 1000 Non-Slip Tape</b> .....	26
<b>Pro® Measurement Printed Ruler Paper Tape</b> .....	27
<b>Cable Path® Zone Coated Gaffers Tape</b> .....	27

<b>Specialty Services</b> .....	28
---------------------------------	----



### Pro® Duct 100 Tape 7 mil Economy Duct Tape



Pro® Duct 100 is a 7 mil general purpose duct tape for bundling, sealing, repairing and waterproofing.

**Technical Specs** **Made in the USA**

Backing: Waterproof Polyethylene Coated Cloth	
Adhesive: Natural Rubber	Total Thickness: 7.0 mils
Temperature Range: 40°F to 200°F	Tensile Strength: 18 lbs. per inch
Elongation: 21%	Adhesion to steel: 106 oz. per inch

### Pro® Duct 110 Tape 9 mil General Purpose Duct Tape



Pro® Duct 110 is 9 mil general purpose Duct tape used for bundling, holding, repairing and general purpose packaging.

Specifications: Can contribute toward satisfying EQ Credit 4.1 (Low Emitting Materials) under LEED.

**Technical Specs** **Made in the USA**

Backing: Waterproof Polyethylene Coated Cloth	
Adhesive: Natural Rubber	Total Thickness: 9.0 mils
Temperature Range: 40°F to 200°F	Tensile Strength: 24 lbs. per inch
Elongation: 20%	Adhesion to steel: 70 oz. per inch

### Pro® Duct 120 Tape 10 mil Industrial Grade Duct Tape



Pro® Duct 120 is a 10 mil industrial grade duct tape. Pro® Duct 120 is typically used in HVAC industry on sheet metal and flex duct but can also be used in carton sealing, book binding, seat repair, holding and bundling

**Technical Specs** **Made in the USA**

Backing: Waterproof Polyethylene Coated Cloth	
Adhesive: Natural Rubber	Total Thickness: 10.0 mils
Temperature Range: 50°F to 200°F	Tensile Strength: 27 lbs. per inch
Elongation: 17%	Adhesion to steel: 55 oz. per inch

### Pro® Duct 139 Tape 9 mil Specialty Grade Duct Tape



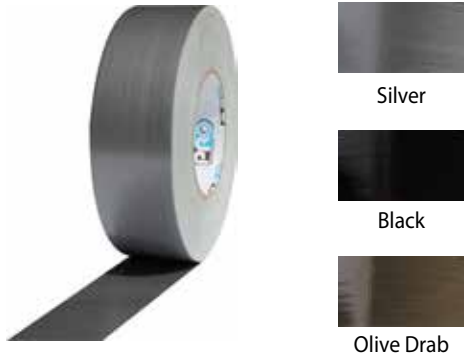
Pro® Duct 139 is a 9 mil specialty grade duct tape available in 4 brilliant fluorescent colors. Common applications for Pro® Duct 139 include bundling, sealing cartons, binding books, repairing seats, color coding and splicing.

**Technical Specs** **Made in the USA**

Backing: Waterproof Polyethylene Coated Cloth	
Adhesive: Natural rubber	Total Thickness: 9.0 mils
Temperature Range: 50°F to 200°F	Tensile Strength: 22 lbs. per inch
Elongation: 16%	Adhesion to steel: 50 oz. per inch

## Pro® 130

### 12 mil Premium Grade Duct Tape



Pro® Duct 130 is 12 mil premium grade duct tape and is typically used in motorsports, silk screening, plastering, stucco masking, HVAC duct systems, bundling, seaming and splicing.

Specifications: Meets FSI 10/SDI 10

#### Technical Specs

**Made in the USA**

Backing: Waterproof Polyethylene Coated Cloth	
Adhesive: Natural rubber	Total Thickness: 12.5 mils
Temperature Range: 50°F to 200°F	Tensile Strength: 34 lbs. per inch
Elongation: 14%	Adhesion to steel: 56 oz. per inch

## Pro® 132

### 12 mil Heavy-Duty Duct Tape



Pro® 132 is a 12 mil heavy duty cloth duct tape that contains natural rubber adhesive base with waterproof polyester/cotton blend cloth backing. Pro® 132 is a heavy duty waterproof packaging tape meeting government specifications. Pro® 132 can be used as mil spec packaging tape, masking silk screen frames and to seal moisture proof cartons or canisters and tubing.

Specifications: ASTM D 5486M-06 Type IV; PPP-T-60E Type IV Class I

#### Technical Specs

**Made in the USA**

Adhesive: Waterproof Polyethylene Coated Cloth	
Total Thickness: 12.4 mils	Temperature Range: 50°F to 200°
Tensile Strength: 41 lbs. per inch	Elongation: 12%
Adhesion to steel: 54 oz. per inch	

## Pro® 140

### Polyester Cotton Cloth



Pro® 140 is a polyester cotton blend pressure sensitive tape. Pro® 140 is commonly used as a harness wrap tape, bundling molding, coils, metals, and sealing of cans in the baking industry.

#### Technical Specs

**Made in the USA**

Backing: Polyester Cotton Blend	Adhesive: Rubber Based
Total Thickness: 10.0 mils	Tensile Strength: 36lbs. per inch
Adhesion to steel: 28 oz. per inch	

## Pro® 160

### Transparent Duct Tape



Pro® Duct 160 is a versatile waterproof poly/scrim duct tape that can be used in a wide range of sealing, joining, repairing, binding and protecting applications. Has superior water resistance. Acrylic adhesive and easy cross tear. UV Resistant.

#### Technical Specs

Backing: Biaxially Oriented Polypropylene	
Adhesive: Acrylic Resin	Total Thickness: 6.0 mils
Temperature Range: -20°F to 150°F	Tensile Strength: 36 oz. per inch
Elongation: 20%	Adhesion to steel: 32 oz. per inch



## Pro Gaff® Matte Cloth Tape



Pro Gaff® is a matte cloth tape with a rubber based adhesive system. Pro Gaff® is used for temporary holding of light fixtures, dance floor splicing, wire and cable hold down, marking and labeling equipment cases. Pro Gaff® is available in high visibility colors for marking of stairs, exits or sets. Twenty available colors make it easy to match Pro Gaff® to any carpet color.

### Technical Specs

**Made in the USA**

Backing: Cotton Cloth	Adhesive: Synthetic rubber based
Tensile strength: 50 lbs. per inch	Elongation: 4%
Total Thickness: 11 mils	Adhesion to steel: 75 oz. /in
Service Temperature: 50°F to 180°F	

## Pro® Pocket Gaff Retail Pack



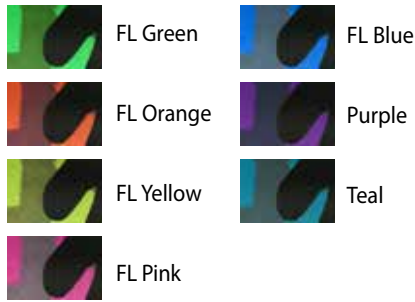
Pro® Pocket Gaff Retail Pack is a rubber based impregnated cloth tape with a matte finish conveniently packaged for retail use with UPC barcode, blister card, and hang tab. Just like Pro Gaff®, the pocket version is used for temporary holding of light fixtures, wire and cable hold down, dance floor splicing, bundling of cables, marking and labeling equipment cases.

### Technical Specs

**Made in the USA**

Backing: Cotton Cloth	Adhesive: Synthetic Rubber
Total Thickness: 11.0 mils	Temperature Range: 50°F to 180°F
Tensile Strength: 50 lbs. per inch	Elongation: 4%
Adhesion to steel: 75 oz. per inch	Core: 1" ID

## Pro® Pocket Cool Camo Gaff



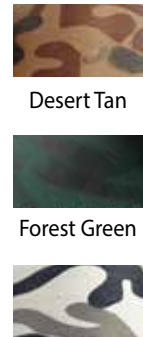
Pro® Pocket Cool Camo is a 1" & 2" wide roll of matte cloth tape printed with a camouflage pattern conveniently packaged "retail ready" with clamshell pack and hang-tab. Pro® Pocket Cool Camo Retail Clamshell Pack can be used for hockey and athletic tape, color coding, arts and crafts, book binding, wire and cable bundling, seat repair, party decorations, personalizing luggage, seaming and general purpose protection.

### Technical Specs

**Made in the USA**

Backing: Cotton Cloth	Adhesive: Synthetic Rubber
Total Thickness: 11.0 mils	Temperature Range: 50°F to 180°F
Tensile Strength: 50 lbs. per inch	Elongation: 4%
Adhesion to steel: 75 oz. per inch	Core: 1" ID

## Pro® Camo Gaff Tape



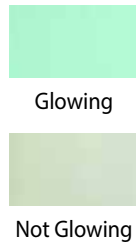
Winter White (custom color)

Pro® Camo Gaff tape is a premium matte camouflage cloth tape with a cured rubber adhesive system. Pro® Camo Gaff tape has a high performance adhesive tape that will hold firmly for extended periods of time on most surfaces and remove without residue. Pro® Camo Gaff tape is used in hunting and fishing or where camouflage is needed.

### Technical Specs

Backing: Cotton Cloth	Adhesive: Synthetic Rubber Based
Total Thickness: 11.0 mils	Temperature Range: 50°F to 180°F
Tensile Strength: 50 lbs. per inch	Elongation: 4%
Adhesion to steel: 75 oz. per inch	

## Pro Glow Gaff®



Pro Glow Gaff is a premium gaffer product that glows in the dark. It boasts the same high quality adhesive system as the premium gaffers product therefore; it has good adhesion and clean removability. Applications for stage safety are numerous, including marking stairs, exits, etc.

Colors: Glow

### Technical Specs

**Made in the USA**

Backing: Vinyl Coated Cloth	Adhesive: Synthetic Rubber
Total Thickness: 12.5 mils	Temperature Range: 45°F to 200°F
Tensile Strength: 48 lbs. per inch	Adhesion to steel: 80 oz. per inch



### Pro® 167 Filament Tape



Clear

Pro® 167 is a general purpose packaging tape reinforced with continuous glass-yarn filaments that give the tape high tensile strength and low stretch. The clear backing provides excellent abrasion and moisture resistance. The aggressive packaging-grade adhesive is specifically formulated to provide an excellent balance of high initial adhesion and long term holding power to most fiberboard surfaces. When used in bundling, reinforcing, or coil tabbing applications, where high temperatures and/or oily surfaces are involved, tests should be conducted per the individual application before extensive use to determine the tape's suitability.

#### Technical Specs

Backing: Filament	Adhesive: Rubber Resin
Total Thickness: 6.0 mils	Temperature Range: -20°F to 150°F
Tensile Strength: 300 lbs. per inch	Elongation: 4%
Adhesion to steel: 50 oz. per inch	Adhesion to steel: 106 oz. per inch

### Pro® 180 Filament Tape



Clear

Pro® 180 is a utility grade fiberglass reinforced tape designed for the majority of packaging, palletizing and unitizing applications.

#### Technical Specs

**Made in the USA**

Backing: Biaxially Oriented Polypropylene Film	
Adhesive: Synthetic Rubber Resin	Total Thickness: 4.0 mils
Tensile Strength: 100 lbs. per inch	Elongation: 3%
Adhesion to steel: 48 oz. per inch	

### Pro® 183 Kraft Paper Tape



Light Brown

Pro® 183 Kraft Paper Tape is a pressure sensitive, light brown flat back paper packaging tape. Pro® 183 is recommended for the following applications: light-to-medium carton sealing, packaging, picture framing, splicing and tabbing.

Specifications: Complies with the Federal Food, Drug and Cosmetic Act, CFR Title 21, Subpart B, Par.175.105.

#### Technical Specs

Backing: Paper	Adhesive: Rubber Resin
Total Thickness: 6.0 mils	Tensile Strength: 38.6 lbs. per inch
Elongation: 9%	Adhesion to steel: 37.8 oz. per inch

### Pro® 184HD Heavy-Duty Kraft Paper Tape



Dark Brown

Pro® 184HD Kraft Paper Tape is a pressure sensitive, flat back packing tape. Pro® 184HD is a high tensile kraft paper carton sealing tape for standard and heavy duty packaging. Pro® 184HD was developed for sealing boxes for the "moving" industry, where high hold and easy tearing is required. It can also be used to make roll-to-roll splices on the paper and paperboard industries for high tension and temperature demanding processes.

Specifications: Complies with the Federal Food, Drug and Cosmetic Act, CFR Title 21, Subpart B, Par.175.105.

#### Technical Specs

Backing: Paper	Adhesive: Rubber Resin
Total Thickness: 6.5 mils	Tensile Strength: 56 lbs. per inch
Elongation: 3%	Adhesion to steel: 68.1 oz. per inch



## Pro® 185

### Flatback Paper Tape



Brown

Pro® 185 is an economical flatback paper tape designed to offer a positive seal and excellent adhesion to minimize carton sealing failures and prevent pilferage. Pro® 185 has an aggressive synthetic rubber based adhesive. Pro® 185 can be used for carton sealing, packaging, silk screening, picture framing, splicing and tabbing.

Colors: Brown

Specifications: PPP-T-42C Type II, and C.I.D. A-A-883B Type II

#### Technical Specs

**Made in the USA**

Backing: Kraft Flatback	Adhesive: Rubber
Total Thickness: 7.3 mils	Temperature Range: 60°F to 175°F
Tensile Strength: 40 lbs. per inch	Elongation: 7%
Adhesion to steel: 58 lbs. per inch	

## Pro® 188

### Tensitized Polypropylene Tape



White

Pro® 188 is a specialty grade tensitized polypropylene heavy-duty strapping tape with clean removal rubber based adhesive. Pro® 188 is comprised of an aggressive, high shear, hot melt adhesive system. Pro® 188 is ideal for coil tabbing, L-clip and appliance applications.

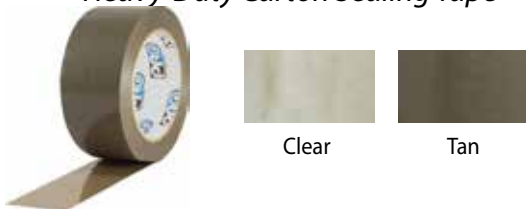
Colors: White

#### Technical Specs

Backing: Monoaxially Oriented Polypropylene Film (MOPP)	
Adhesive: Natural Rubber	Total Thickness: 4.6 mils
Tensile Strength: 150 lbs. per inch	Elongation: 26%
Adhesion to steel: 65 oz. per inch	

## Pro® 919

### Heavy-Duty Carton Sealing Tape



Clear

Tan

Pro® 919 Heavy Duty Polypropylene Carton Sealing Tape. Pro® 919 is a heavy duty polypropylene film coated with a high tack adhesive designed for automatic packaging and carton sealing equipment lines. Pro® 919 is specifically designed for heavy duty carton sealing applications. It is designed for smooth easy dispensing either manually or automatically.

Colors: Clear, Tan

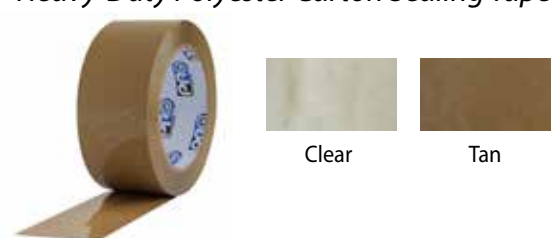
Specifications: Tan meets US military specification: PPP-T-60E Type III, Class 1. Clear is considered water resistant as per ASTM D5570 and also complies with the Federal Food, Drug and Cosmetic Act, CFR Title 21, Subpart B, Par. 175.105 (covers the use of pressure sensitive adhesives and tapes for 'indirect contact' food packaging, such as box sealing). CID A-A-1684B and ASTM D5486 Type III.

#### Technical Specs

Backing: Biaxially Oriented Polypropylene Film	Adhesive: Rubber Resin
Total Thickness: 3.0 mils	Elongation: 140%
Tensile Strength: 35 lbs. per inch (machine direction), 70 lbs. per inch (cross direction)	
Adhesion to steel: 55 oz. per inch	

## Pro® 929

### Heavy-Duty Polyester Carton Sealing Tape



Clear

Tan

Pro® 929 is a superior performance packaging tape used for box sealing, splicing, re-cooperage and other demanding packaging applications. This product has a strong abrasion resistant backing and the most consistent pressure sensitive hot melt adhesive system available. This time proven construction assures high performance in a wide range of environments and applications.

Colors: Clear, Tan

Specifications: ASTM D5486 Type 1 Class 1, PPP-T-60E Amend. 2 Type III Class 2 (Clear) CID A-A-1830B (Clear)

#### Technical Specs

Backing: Biaxially Oriented Polyester Film	
Adhesive: Pressure Sensitive Hot Melt Rubber Resin	
Total Thickness: 3.43 mil	Elongation: 130%
Tensile Strength: 67 lbs. per inch (machine direction), 69 lbs. per inch (cross direction)	
Adhesion to steel: 78 oz. per inch	



### Pro® Seal 300 Carton Sealing Tape



Pro® Seal 300 is a polypropylene general purpose carton sealing tape. Pro® Seal 300 is excellent for all general purpose hot melt carton sealing applications. Pro® Seal 300 was designed for smooth and easy dispensing.

Colors: Clear, Tan

#### Technical Specs

Backing: Biaxially Oriented Polypropylene Film	
Adhesive: Synthetic Rubber Resin	Total Thickness: 1.8 mils
Temperature Range:	Tensile Strength: 27 lbs. per inch
Elongation: 70%	Adhesion to steel: 32 oz. per inch

### Pro® Seal 300AC Carton Sealing Tape



Pro® Seal 300AC is a polypropylene general purpose carton sealing tape. Pro® Seal 300AC is used for all general purpose carton sealing applications. Pro® Seal 300AC is designed for smooth, easy dispensing.

Colors: Green, Purple, Black, Blue, Orange, Red, White, Yellow, Pink

#### Technical Specs

Backing: Biaxially Oriented Polypropylene Film	
Adhesive: Water-based Acrylic Adhesive	Total Thickness: 2.0 mils
Temperature Range: 32°F to 140°F	Tensile Strength: 18 lbs. per inch
Elongation: 100%	Adhesion to steel: 22 oz. per inch

### Pro® 700 Tamer Evident Tape



Pro® 700 Tamper Evident Tape is specifically designed to leave behind a hidden "OPENED" message when peeled away by unwanted parties. Pro® 700 Tamper Evident Tape is formulated to seal a variety of surfaces such as paper and plastic security envelope flaps as well as corrugated packages and boxes. Pro® 700 Tamper Evident Tape is widely used by the electronics, aviation, trucking, medical / pharmaceutical and jewelry industries.

Colors: Red with Black Print

#### Technical Specs

Backing: 1 mil Polyester	Adhesive: Aggressive Hot Melt
Temperature Range: 32°F to 120°F	Adhesion to steel: 58 lbs. per inch



## Pro® Artist Tape Flatback Paper Tape



Pro® Artist Tape is a premium flatback paper tape used for color coding, labeling. Printable with: flexo inks, markers, pens and pencils.

Specifications: ASTM D6123/D6123M-07, Type II. ASTM D-4236 (except fl colors), White color is PH Neutral

### Technical Specs

**Made in the USA**

Backing: Flatback Paper	Adhesive: Synthetic Rubber
Total Thickness: 5.8 mils	Temperature Range: 40°F to 150°F
Tensile Strength: 30 lbs. per inch	Elongation: 2.5%
Adhesion to steel: 57 oz. per inch	

## Pro® 46 Colored Crepe Tape



Pro® 46 is a rubber based colored crepe paper tape. Pro® 46 is used on a wide variety of smooth substrates as a printed or unprinted general purpose tape. Pro 46 can be used for packaging, bundling, binding, holding, splicing, banding, labeling, color coding, decorating and identification.

Specifications: ASTM D6123/D6123M-07, Type II. Conforms to ASTM D-4236

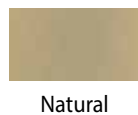
### Technical Specs

**Made in the USA**

Backing: Colored Crepe Paper	Adhesive: Rubber Based
Total Thickness: 4.7 mils	Temperature Range: 60°F to 150°F
Tensile Strength: 18 lbs. per inch	Elongation: 8%
Adhesion to steel: 33 oz. per inch	

## Pro® 785

### Contractor Grade Masking Tape



Natural

Pro® 785 is contractor grade, medium temperature masking tape. Pro® 785 provides excellent adhesion to a wide variety of surfaces and a wide range of application fields including commercial and residential painting and construction, industrial masking, holding and packaging.

Specifications: ASTM D6123, ASTM D6123M-07 Type 1, PPP-T-42C Type 1

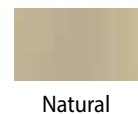
### Technical Specs

**Made in the USA**

Backing: Crepe Paper	Adhesive: Rubber
Total Thickness: 5.8 mils	Temperature Range: 50°F to 200°F.
Tensile Strength: 23 lbs. per inch	Elongation: 9%
Adhesion to steel: 39 oz. per inch	

## Pro® 795

### General Purpose Masking Tape



Natural

Pro® 795 is a general purpose masking tape. Pro® 795 provides excellent adhesion to a wide variety of surfaces in a number of fields including, light bundling, packaging and closing, and light duty masking.

Colors: Natural

Specifications: ASTM D 6123/D 6123M-97 (2012), Type I

### Technical Specs

**Made in the USA**

Backing: Crepe Paper	Adhesive: Synthetic Rubber
Total Thickness: 4.6 mils	Temperature Range: 60°F - 150°F
Tensile Strength: 18 lbs. per inch	Elongation: 7%
Adhesion to steel: 30 oz. per inch	

## Pro® Drafting Economy Masking Tape



Pro® Drafting Tape is an industrial grade masking tape with specially formulated adhesive system, designed for the drafting and stationary trades. A tack industrial grade masking tape with specially formulated adhesive system, designed for the drafting and stationary trades. It minimizes residues and resists water solvents and oil and has an excellent shelf-life. Not designed or guaranteed for exacting industrial masking spray, painting or oven baking applications.

Specifications: UU-T-93D, AA-194-C

### Technical Specs

**Made in the USA**

Backing: White Translucent Latex Saturated Paper	
Adhesive: Water Based Natural Latex	Total Thickness: 4.0 mils
Temperature Range:	Tensile Strength: 20 lbs. per inch
Elongation: 2.4%	Adhesion to steel: 17 oz. per inch

## Pro® 4000 Paper Application Tape



Pro® 4000 is a medium tack paper application tape for vinyl graphics used in sign making and surface protection. The product consists of self-wound, standard grade saturated backing coated with a specially formulated latex pressure sensitive adhesive.

### Technical Specs

Backing: White Translucent Latex Saturated Paper	
Adhesive: Water Based Natural Latex	Total Thickness: 4.0 mils
Elongation: 2.4%	Adhesion to steel: 17 oz. per inch

## Pro® 708 8-Day Painter's Tape



Pro® 708 Green is an 8 day safe release painter's masking tape. Pro® 708 removes cleanly from painted metal, wood, glass and sheetrock for up to 8 days. Pro® 708 is a highly conformable and UV resistant. Pro® 708 can be used as holding plastic or paper drop cloths. Pro® 708 has a high quality rubber-based adhesive system. Pro® 708 is compatible for use on lacquer or polyurethane-coated surfaces, unfinished wood, wallpaper, or new, unpainted, or freshly painted wallboard.

### Technical Specs

**Made in the USA**

Backing: Crepe Paper	Adhesive: Synthetic Rubber
Total Thickness: 5.9 mils	Temperature Range: 50°F to 150°F
Tensile Strength: 18 lbs. per inch	Elongation: 11%
Adhesion to steel: 22 oz. per inch	

## Pro® Scenic 714 Blue Mask 14-Day Painter's Tape



Pro® Scenic 714 Blue Mask is a 14-day painter's tape. Pro® Scenic 714 Blue Mask should be used wherever masking will be exposed to weather/out of doors conditions, interior masking of windows (where adhesive will be directly exposed to sunlight), and protective. Pro® Scenic 714 Blue Mask is compatible for use on lacquer or polyurethane - coated surfaces, unfinished wood, wallpaper, and new, unpainted, or freshly painted wallboard.

Specifications: ASTM D6123 / D6123M-97 (2012) Type 1

### Technical Specs

**Made in the USA**

Backing: Fine Structured Crepe Paper	Adhesive: Synthetic Rubber
Total Thickness: 5.6 mils	Temperature Range: 50°F to 200°F
Tensile Strength: 21 lbs. per inch	Elongation: 10%
Adhesion to steel: 32 oz. per inch	

# UGlu®

## The Strength of Adhesive, The Convenience of Tape!

Instant Grip, Powerful Bond, No Mess Ever! A unique and innovative form of liquid adhesive that is both waterproof and weatherproof. This adhesive is in a convenient tape-like format and bonds to a wide variety of surfaces, including rough or uneven surfaces.

UGlu® features 20mil rubber based mounting adhesive offered in a wide variety of convenience size options including strips, patches, dashes and rolls. UGlu® is often used in the arts & crafts industry for mounting, bonding, securing and temporary holding.

Bonds to: fiberglass, metal, cement, brick, sealed wood, plastics, carpet, canvas, leather, foam, glass and ceramic. Can be cut to size and cleanly removed.

Colors: Transparent with White Liner

Adhesive: Rubber

Total Thickness: 20 mils

Non-toxic

Acid Free

pH Neutral

**Made in the USA**

## UGlu® 200 Strips Family Pack



### Technical Specs

Family Pack: (5) 1 in x 2 in, (5) 1 in x 3 in, (5) 1 in x 4 in	
Pcs/Case: 1080	Pcs/Pack: 15
Packs/Master: 72	

## UGlu® 300 Power Patch



### Technical Specs

Power Patch (5) 3in x 3in Strips	Pcs/Case: 720
Pcs/Pack: 5	Packs/Master: 144

## UGlu® 500 Roll



### Technical Specs

(5) 3in x 3in Strips	Pcs/Case: 240
Pcs/Pack: 5	Packs/Master: 48

## UGlu® 600 Dashes Sheets

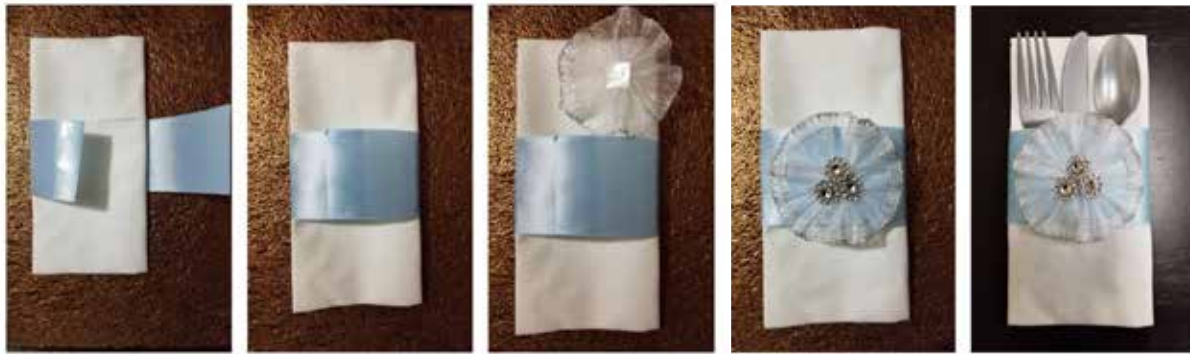


### Technical Specs

Dash Sheets 1/2in x 5/8in squares	40 Dashes per sheet
4 Sheets per envelope/pack	160 Dashes per envelope/pack
144 packs per master	

\*Not recommended for use on plastics.

## UGlu®



UGlu® Dashes being used to assemble a decorative place setting

### UGlu® 650 Dashes Roll



#### Technical Specs

Dash Roll, 1/2 in x 5/8 in squares	200 Dashes per Roll
Pcs/Pack: 1 roll	Packs/Master: 96

### UGlu® 700 DIY Pack



#### Technical Specs

DIY Pack (1) 1 in x 60in Roll, (4) 1/2in x 5/8in Dash Sheets, (15) 1 in x 3in Strips	
Pcs/Pack: 20	Packs/Master: 12

### UGlu® 900 Contractor Pack



#### Technical Specs

Contractor Pack (250) 1 in x 3 in Strips	Pcs/Case: 1,500 sheets
Pcs/Pack: 250 roll	Packs/Master: 6

### UGlu® Industrial Roll



#### Technical Specs

UGlu® 20mil 3/4x65FT Slit Imperial, Shrink wrapped with Front & Back Roll Label	
UGlu® 20mil 1x65FT Slit Imperial, Shrink wrapped with Front & Back Roll Label	

\*Not recommended for use on plastics.

**Pro® 400**  
Double Coated Paper Tape



Natural

Pro® 400 is a 3.5mil impregnated crepe paper coated on both sides with 2.5mils of rubber adhesive. The adhesive exhibits high tack and moderate shear properties. The Pro® 400 is used where an economical, general purpose double coated paper tape with good tensile strength is needed. It is also used for bonding and laminating to a wide variety of plastics, metals, papers, also various types of parts to be machined. Also used in splicing applications and core start up applications.

**Technical Specs**

Adhesive (liner and exposed side): Rubber	
Liner: 60# White Densified Kraft	Carrier: 3.5mil Yellow Crepe Paper
Peel exposed side: 80 oz. per inch	Peel liner side: 80 oz. per inch

**Pro® 406**  
Double Coated Polyester Tape



White

Pro® 406 is a double coated polyester tape. The exposed side adhesive is a new, general purpose rubber based adhesive designed for bonding to a wide variety of polyurethane and polyethylene foams, felt, rubber, sponge, cork, abrasive materials and gasket materials. The liner side adhesive is a new, general purpose rubber based adhesive the bonds well to most substrates at room temperature. This adhesive exhibits high tack and high peel strength. Liner: 60# polycoated lay-flat silicone treated release liner. Designed to bond to: foams, felt, rubber, sponge, cork, abrasive materials, and gasket materials.

**Technical Specs**

Adhesive: Rubber	Elongation: 350%
Carrier: 60# Polycoated Lay-Flat Silicone Treated Release Liner	
Liner Side Adhesive Thickness: 1.7 mils	Exposed Side Adhesive Thickness: 1.7 mils
Carrier Thickness: 0.5 mils	Total Thickness: 3.9 mils

**Pro® 408**  
Double Coated Polyester Tape



White

Pro® 408 is a double coated polyester film tape coated on both sides with an aggressive acrylic pressure sensitive adhesive. Pro® 408 is used for bonding and laminating to a wide variety of cloths, vinyl's, corks, paper, rigid and flexible plastics. Pro® 408 is commonly used for mounting displays, such as signs, covers, posters and name plates.

Specifications: pH Neutral

**Technical Specs**

Backing: PET	Adhesive: Acrylic Based
Total Thickness: 3.75 mils	Temperature Range: -4°F to 212°F
Elongation: 3.5%	Adhesion to steel: 22 oz. per inch

**Pro® 410**  
Double Coated Non-Woven Tape



Transparent with white liner

Pro® 410 is a double coated non-woven tape coated on both sides with an aggressive acrylic pressure sensitive adhesive. Pro® 410 is used for bonding and laminating to a wide variety of cloths, vinyls, corks, paper, rigid and flexible plastics. Pro® 410 is can be used for mounting displays, such as signs, covers, posters, and nameplates. Pro® 410 is a high performance splicing tape specifically designed for splicing in continuous web processes, especially suitable for corrugated paper applications. This product can also be used to support the lamination process in the leather industry and for mounting of door linings in the car industry.

Specifications: pH Neutral

**Technical Specs**

Backing: Tissue	Adhesive: Solvent Based Acrylic
Total Thickness: 7.83 mils	Temperature Range: -4°F to 212°F
Elongation: 3.5%	Adhesion to steel: 89 oz. per inch

## Pro® 500B

### Double Coated Non-Woven Tape



White with Blue Liner

Pro® 500B is a woven cotton cloth, double-coated with an aggressive natural rubber adhesive. Supplied on Blue Liner. Pro® 500B is designed for the convention industry and general purpose uses in aircraft manufacture and construction. Pro® 500B can also be used for general mounting and holding.

Specifications: Boeing BAC5034-4 Section 5.1.a (1)(a); BAC-5317 Rev F

#### Technical Specs

Made in the USA

Backing: Cloth	Adhesive: Rubber
Total Thickness: 11.0 mils	Temperature Range: up to 200°F
Tensile Strength: 20 lbs. per inch	Adhesion to steel: 40 oz. per inch

## Pro® 965

### Double Coated Tape



Clear/Transparent

Pro® 965 Hi-Tack Double Coated Film Tape. Pro® 965 is a double coated adhesive tape consisting of transparent polyester film with a pink PP release liner. The adhesive system is especially resistant to plasticizers and offers a secure bond even at elevated temperatures. Pro® 965 is used for mounting of decorative profiles and moldings, abs plastic parts in the car industry and self-adhesive mounting of rubber/EPDM profiles.

#### Technical Specs

Made in the USA

Backing: Polyester	Adhesive: Acrylic
Total Thickness: 8.1 mils	Tensile Strength: 11.4 lbs. per inch
Temperature Range: 392°F (short term), 212°F (long term)	
Elongation: 50%	Adhesion to steel: 105 oz. per inch

## Pro® 970

### Double Coated Tape



White on Gold Liner

Pro® 970 is a double coated vinyl tape used for permanent bonding to most substrates, such as metal, wood, glass, cement and plastics. Pro® 970 was designed for fixing the decorative trim, such as PVC profile for the furniture industry and can also be used for fastening of nameplates, trophy, luggage tag and labels.

#### Technical Specs

Backing: Un-plasticized PVC film	Total Thickness: 8.3 mils
Temperature Range: -22F to 194F	Elongation: 150%

## Pro® 3008

### Double Coated Tape



White

Pro® 3008 is a 1/8" white, closed cell polyethylene foam coated on both sides with an aggressive, general purpose, rubber based pressure sensitive adhesive. Pro® 3008 can be used for general purpose bonding applications.

#### Technical Specs

Made in the USA

Backing: Foam: Cross-linked Polyethylene		
Adhesive: Rubber	Total Thickness: 1/8 in	
Temperature Range: -20°F to 165°F	Tensile Strength: 228 lbs. per inch	
Elongation: 269%		



**Pro® 3016**  
Double Coated Foam Tape



White

Pro® 3016 is a 1/16" white, closed cell polyethylene foam coated on both sides with an aggressive, general purpose, rubber based pressure sensitive adhesive. Pro® 3016 can be used for general purpose bonding applications.

**Technical Specs** **Made in the USA**

Adhesive: Rubber	Total Thickness: 1/16 in
Temperature Range: up to 180°F	Tensile Strength: 145 lbs. per inch
Elongation: 339%	Adhesion to steel: 137 oz. per inch

**Pro® 3032**  
Double Coated Foam Tape



White

Pro® 3032 1/32" white, closed cell polyethylene foam coated on both sides with an aggressive, general purpose, rubber based pressure sensitive adhesive. Common Applications include mounting, bonding, vibration dampening, splicing, laminating, permanent fastener, sealing.

**Technical Specs** **Made in the USA**

Adhesive: Rubber	Total Thickness: 1/32 in
Temperature Range: up to 180°F	Tensile Strength: 213 lbs. per inch
Elongation: 355%	Adhesion to steel: 137 oz. per inch

**Pro® 3008A**  
Acrylic Double Coated Foam Tape



White

Pro® 3008A is an acrylic based double coated foam tape developed for general purpose bonding applications. Pro® 3008A 1/8" white or black, closed cell polyethylene foam coated on both sides with an aggressive acrylic based pressure sensitive adhesive. Pro® 3008A is used for mounting nameplates, signs, small die cast parts, mirrors, maps, etc. Pro 3008A can also be used for sound and vibration dampening in business machines, industrial equipment, electronic component and packaging and glass panel mounts, seals and gaskets. The acrylic adhesive is recommended for outdoor applications due to its higher temperature, UV, weather, chemical and plasticizer resistance.

**Technical Specs** **Made in the USA**

Liner: 80# White SCK	Foam: Cross-Linked Irradiated Cellular Polyethylene
Adhesive: Acrylic	Thickness: 1/8"
Adhesion to steel: 60 oz. per inch	

**Pro® 3016A**  
Acrylic Double Coated Foam Tape



White

Black

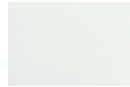
Pro® 3016A is an acrylic based double coated foam tape developed for general purpose bonding applications. Pro® 3016A 1/16" white or black, closed cell polyethylene foam coated on both sides with an aggressive acrylic based pressure sensitive adhesive. Pro® 3016A can be used for the following common applications mounting, bonding, vibration dampening, splicing, laminating, permanent fastener, sealing.

**Technical Specs** **Made in the USA**

Liner: 60# 2.8 mil	Foam: Cross-Linked Irradiated Cellular Polyethylene
Adhesive: Acrylic	Thickness: 1/16"
Adhesion to steel: 55 oz. per inch	

### Pro® 3032A

Acrylic Double Coated Foam Tape



White



Black

Pro® 3032A is an acrylic based double coated foam tape developed for general purpose bonding applications. Pro® 3032A 1/32" white or black, closed cell polyethylene foam coated on both sides with an aggressive acrylic based pressure sensitive adhesive. Common applications include mounting, bonding, vibration dampening, splicing, laminating, permanent fastener, and sealing.

#### Technical Specs

Made in the USA

Adhesive: Acrylic	Total Thickness: 1/32 in
Temperature Range: 10°F to 176°F	
Tensile Strength: 65 oz. per inch	

### Pro® 155

2 Mil Adhesive Transfer Tape



Pro® 155 2 mil Adhesive Transfer Tape. Pro® 155 is an excellent adhesive for flying splices on paper, films, and foil. Pro® 155 can be used for laminating, mounting and nameplate applications. Ideal for high processing temperatures. Ideally suited for use in printer's dry tunnels. Performance proven dependability promotes production line efficiencies in paper and film industries.

Color: Transparent

#### Technical Specs

Made in the USA

Adhesive: Acrylic	Total Thickness: 2.0 mils (without liner)
Temperature Range: 10°F to 390°F	Adhesion to steel: 20 oz. per inch

### Pro® 156

5 Mil Adhesive Transfer Tape



Pro® 156 5 mil Adhesive Transfer Tape. The standard core is a 3" I.D. plastic core. Pro® 156 can be used as a laminating adhesive for foam, fabrics, metal or plastic nameplates, and is an excellent product for splicing of films, fabrics and foils. Pro® 156 is also suited for joining materials with irregular or textured surfaces.

Specifications: MIL-P-19834B, Amend I

Color: Transparent

#### Technical Specs

Made in the USA

Adhesive: Acrylic	Total Thickness: 9.0 mils (including liner)
Temperature Range: 70°F to 100°F	Adhesion to steel: 75 oz. per inch

### Pro® Net 10

Micro Scrim Tape



Transparent with Gold/Yellow Liner

Pro® Net 10 is a micro scrim reinforced 3.2 mil thick acrylic adhesive transfer tape. Pro® Net 10 is specifically designed for difficult bonding applications. This product has excellent quick stick for permanent bond applications on plastics, metals, nonwovens, felts, foams including polyurethane, polyether, polyester, neoprene, polyethylene and EPDM.

#### Technical Specs

Made in the USA

Adhesive: Acrylic Adhesive	Total Thickness: 3.2 mils
Temperature Range: -40°F to 200°F	Adhesion to steel: 48 oz. per inch

## Extreme High Bond Tape

Pro® EHB (Extreme High Bond) is a modified acrylic foam adhesive tape. Pro® EHB tape is used in many permanent indoor and outdoor applications. EHB tape often replaces spot welds, rivets, nails, liquid adhesives and other permanent fasteners.

### Technical Specs

Adhesive: Modified Acrylic	Temperature Range: Long term: 212°F to 248°F
Tensile Strength: 75-86 lbs. per inch	

### Benefits:

- Thickness helps adhesion to irregular surfaces.
- Acrylic foam combines a high level of internal strength.
- Modified acrylic adhesive bonds well to metals, glass, painted surfaces and medium/low surface energy plastics.

### Common Applications:

- Bonding, Vibration Dampening, Splicing, Permanent Fastener

### Features:

- Bond Builds Over Time, Good Adhesion, Low Temperature Application , Short Term - High Temperature Resistance, Permanent Bond, Outdoor Use, Highly Conformable

### Pro® 5110G



Pro® 5110G EHB (Extreme High Bond)

Colors: Grey on Red Liner

Total Thickness: 45 mils

### Pro® 5100C



Pro® 5100C EHB (Extreme High Bond)

Colors: Clear on Red Liner

Total Thickness: 40 mils

### Pro® 5110W



Pro® 5110W EHB (Extreme High Bond)

Colors: White on Red Liner

Total Thickness: 45 mils

### Pro® 5050C



Pro® 5050C EHB (Extreme High Bond)

Colors: Clear on Red Liner

Total Thickness: 20 mils



**ATG Tape** is a non-yellowing adhesive transfer tape where the adhesive is “reverse wound” meaning the adhesive is wound on the outside of the roll, ideal for use in an adhesive transfer gun where the tape is threaded around the roller at the nose of the gun adhesive side out.

Applications/Uses: Picture Framing & Matting Boards, Mounting Promotional Products & Posters, Scrapbooking, Gift Wrapping, Card Making, Invitations, Sealing Envelopes, Fabric Mounting, Arts & Crafts Projects.

Recommended Bonding Surfaces: Glass, Wood, Papers, Paint, Plastics

To operate the ATG gun you squeeze the trigger, releasing the roller and then press the nose against the surface to be glued and pull back. The roller rolls out the double-sided adhesive, peeling up the liner as it goes, threading it back into the gun. Please see our instructional video on how to load the ATG gun at: <https://vimeo.com/176750163>

### Pro® 154 ATG

*2 Mil Reverse Wound Adhesive Transfer Tape*



Pro® 154 ATG 2 mil Adhesive Transfer Tape. Pro® 154 ATG is an excellent adhesive for flying splices on paper, films, and foil. Pro® 154 ATG can be used for laminating, mounting and nameplate applications, aluminum foil identification plates, and miscellaneous holding.

Color: Transparent

#### Technical Specs

**Made in the USA**

Adhesive: Acrylic	Total Thickness: 2.0 mils (without liner)
Temperature Range: -20°F to 150°F	Adhesion to steel: 32 oz. per inch

### Pro® ATG HD Dispenser



Pro ATG HD Dispenser is an Adhesive Transfer Tape Dispenser with extended nose works for all sizes.



## Pro® 150

### High Performance Butyl Duct



Black

Pro® 150 is a high performance single-sided butyl duct tape. Pro 150® is used for joint sealing (water and air) for house wrapping sheet and also for OSB, plywood panel.

#### Technical Specs

**Made in the USA**

Adhesive: Butyl Rubber	
Backing: Polyethylene Laminated Synthetic Cloth	
Total Thickness: 13.7 mils	Tensile Strength: 34.66 lbs. /inch

## Pro® Flex

### Patch & Shield Butyl Tape



White



Grey



Black



Clear

Pro® Flex Patch & Shield Tape is an all-weather, flexible butyl patch and shield repair tape. It is the heaviest, most aggressive sealing tape available. Pro® Flex Tape can be used to reinforce non-leaking seams and for additional security around curbs, vents, chimneys, AC systems, antennas or any roof-penetrating devices. Pro® Flex is easy to apply to any clean, dry surface. It is flexible and readily conforms to shapes, making it well suited for gutter repairs, piping or other curved equipment. Pro® Flex is also recommended for use when stopping leaks on mobile homes, RVs, rail cars, trucks/vans, garden sheds, tarpaulins and some unpressurized piping.

#### Technical Specs

**Made in the USA**

Adhesive: Butyl Rubber	Total Thickness: 28.0 mils (+/- 2mils)
Temperature Range: -70°F to 200°F	Tensile Strength: 15 lbs. per inch
Elongation: 700%	Adhesion to steel: 14 oz. per inch

## Pro® 248

### Double Sided Butyl Tape



Black with white liner

Pro® 248 is a double sided tape with polyethylene net carrier, both sides coated with waterproofing butyl adhesive Pro® 248 is a black tape with black adhesive. Being superior to durability, cold and heat resistance, this tape is used not only for waterproofing of residential house but also for improving of operation of waterproofing and noise insulation applications. Pro® 248 has an ideal property for temporary fixing, joint sealing of building materials and fixing of flooring materials.

#### Technical Specs

Adhesive: Butyl Rubber	Total Thickness: 20 mils
Temperature Range: up to 200°F	Tensile Strength: 9 lbs. per inch
Adhesion to steel: 36 oz. per inch	



**Pro® Friction**  
Abrasion Protection Tape



Pro® Friction Tape is a high quality cotton fabric coated on both sides with a black rubber adhesive compound which provides good adhesion to all types of surfaces. Friction Tape is a 15mil general purpose tape that provides excellent protection against abrasion. Apply over tool handles for a non-slip grip. Temporary binding & harnessing tape.

**Technical Specs**

Adhesive: Rubber Coated Both Sides	Total Thickness: 13 mils
Temperature Range: up to 176°F	Tensile Strength: 48 lbs. per inch
Adhesion to steel: 40 oz. per inch	

**Pro® 603**  
Pipe Wrap Tape



Pro® 603 is a 10 mil pipe wrap tape. Pro® 603 is used for insulating, protection and color coding of electrical wires; for wire harnessing in automotive industry.



**WARNING:** This product can expose you to chemicals including Diisononyl phthalate (DINP), which is known to the State of California to cause cancer, and Di-isodecyl phthalate (DIDP), which is known to the State of California to cause birth defects or other reproductive harm. For more information go to [WWW.P65Warnings.ca.gov](http://WWW.P65Warnings.ca.gov).

**Technical Specs**

Backing: Plasticized PVC	Adhesive: Rubber Based Adhesive
Total Thickness: 10 mils	Temperature Range: 14°F to 176°F
Tensile Strength: 23 lbs. per inch	Elongation: 200%
Adhesion to steel: 22 oz. per inch	

**Pro® 804L**  
Aluminum Foil Tape



Pro® 804L is a 3 mil aluminum foil tape with liner. Pro® 804L dead soft aluminum foil tape offers vapor barrier protection, waterproof sealing, heat reflection/dissipation, and reliable properties for masking and paint stripping and electroplating.

Specifications: MIL-T-23397B Amdt. 2 Type II and Federal Specification L-T-80B

**Technical Specs**

Backing: Dead Soft Aluminum	Adhesive: Acrylic
Total Thickness: 4.8mil	Temperature Range: -30°F to 302°F
Tensile Strength: 26 lbs. per inch	Elongation: 5.5%
Adhesion to steel: 45 oz. per inch	

**Pro® 808L**  
Aluminum Foil Tape



Pro® 808L is a high performance 2.0mil dead soft aluminum foil with liner. Pro® 808L dead soft aluminum foil tape offers a high performance adhesive system with temperature capabilities for use in vapor barrier protections, waterproof dealing heat reflection/dissipation and reliable properties for masking in paint stripping and electroplating.

**Technical Specs**

Backing: Dead Soft Aluminum	Adhesive: Acrylic Clear
Total Thickness: 3.6 mils	Temperature Range: -22°F to 248°F
Tensile Strength: 17.1 lbs. per inch	Elongation: 3.5%
Adhesion to steel: 73 oz. per inch	

**Pro® 882L**  
Copper Foil Tape



Copper

Pro® 882L is a conductive copper foil tape. Pro® 882L construction permits conductivity along, as well as through, tape and adhesive. Pro® 882L is used as a solderable for circuit repair on PC boards. Pro® 882L is used for electromagnetic and radio frequency

Specifications: MIL-T-47012

**Technical Specs**

Backing: Copper Foil	Adhesive: Acrylic, Conductive
Total Thickness: 3.5 mils	Temperature Range: -40°F to 325°F
Elongation: 4%	

**Pro® 730**  
Glass Cloth Tape



White

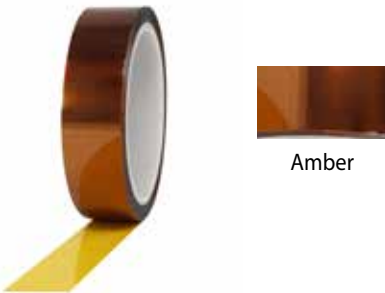
Pro® 730 is a glass cloth substrate with a proprietary rubber based adhesive. Pro® 730 is used for coil wrap banding and crossover insulation.

Specifications: MIL-I-15126 type GFT.

**Technical Specs**

Backing: 5.0 mil Glass Cloth	Adhesive: Rubber Thermosetting
Total Thickness: 7.0 mils	Tensile Strength: 170 lbs. per inch
Elongation: 8%	Adhesion to steel: 40 oz. per inch

**Pro® 950**  
Kapton Polyimide Tape



Amber

Pro® 950 Polyimide Film Tape. Pro® 950 is an ideally suited for continuous high temperature operating conditions. Pro® 950 is used as a ground, barrier and phase insulation in high performance toroidal coils, high frequency motors. Pro® 950 can be used for end turn bundling and connection insulation in small motors. Pro® 950 is also used for cross-over insulation and out wraps on bobbin wound and form wound coils for large rotating machines to bundle conductors and reinforce insulation. Pro® 950 can also be used as wave solder masking of printed circuit boards.

Specifications: UL510 Recognized, Material conforms to mil spec: MIL-P-46112 Type I

**Technical Specs**

Backing: Polyimide Film	Adhesive: Silicone, Thermosetting
Backing Thickness: 1 mil D-3652	Total Tape Thickness: 2.5 mils D-3652
Tensile strength: 24 lbs. per inch D-882-91	
Elongation: 50%	

**Pro® 950AS**  
Anti-Static Kapton Polyimide Tape



Amber

Pro® 950AS Anti-Static Polyimide Film Tape. Pro® 950AS is ideally suited for continuous high temperature operating conditions. Used as a ground, barrier and phase insulation in high performance toroidal coils and high frequency motors, also for end turn bundling and connection insulation in small motors. Used for cross-over insulation and outer wraps on bobbin wound coils for large rotating machines to bundle conductors and reinforce insulation. Also used as wave solder masking of printed circuit boards and in electronics, where anti-static is necessary.

Specifications: UL Certified, Material conforms to mil spec: MIL-P-46112 Type I

**Technical Specs**

Backing: 1 mil, Polyimide Film	Adhesive: Silicone, Thermosetting
Total Thickness: 2.5 mils	Temperature Range: up to 500°F
Tensile Strength: 30 lbs. per inch	Elongation: 70%

## Pro® 960 Polyester Film Tape



Pro® 960 is a green polyester film, single coated with a silicone pressure sensitive adhesive. Pro® 960 is a polyester film, single coated with a silicone pressure sensitive adhesive. Pro® 960 is used for general purpose masking in powder coating applications.

### Technical Specs

Backing: 2.0 mils	Adhesive: 1.4 mils
Total Thickness: 3.4 mils	Temperature Range: up to 425°F

## Pro® 980 Polyester Film Tape



Pro® 980 1mil Red Polyester Tape. Pro® 980 is a 1-mil polyester film, single coated with a silicone pressure sensitive adhesive. General purpose masking in powder coating applications. This product is engineered for applications where no/low residue is a requirement. Pro® 980 designed to perform in all phases of masking operations for printed circuit board production. Pro® 980 protects circuitry from splashes and chemical fumes. Pro® 980 can also be used as a silicone splicing tape.

### Technical Specs

Backing: 1.0 mil, Polyester Film	Adhesive: 2.0 mil, Silicone
Total Thickness: 3.0 mils	Temperature Range: 356°F (short term)
Tensile Strength: 25 lbs. per inch	Elongation: 100%

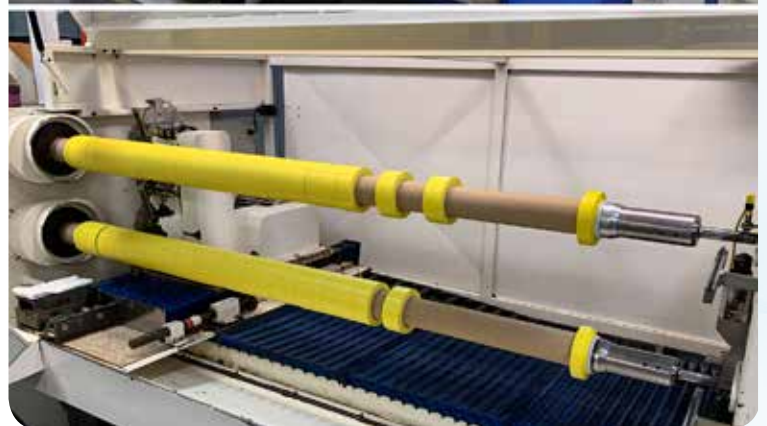
## Pro® 981 Polyester Film Tape



Pro® 981 1mil Blue Polyester Tape. Pro® 981 is a 1-mil polyester film, single coated with a silicone pressure sensitive adhesive. General purpose masking in powder coating applications. This product is engineered for applications where no/low residue is a requirement. Pro® 981 designed to perform in all phases of masking operations for printed circuit board production. Pro® 981 protects circuitry from splashes and chemical fumes. Pro® 981 can also be used as a silicone splicing tape.

### Technical Specs

Backing: 1.0 mil, Polyester Film	Adhesive: 2.0 mil, Silicone
Total Thickness: 3.0 mils	Temperature Range: 356°F (short term)
Tensile Strength: 25 lbs. per inch	Adhesion to steel: 30 oz. per inch





## Pro® Plus Electrical Tape



Pro® Plus is a vinyl plastic insulating tape. Pro Plus is typically used in insulating wire splices, harness wrapping and general industrial maintenance.

**WARNING:** This product can expose you to chemicals including Diisononyl phthalate (DINP), which is known to the State of California to cause cancer, and Di-isodecyl phthalate (DIDP), which is known to the State of California to cause birth defects or other reproductive harm. For more information go to [WWW.P65Warnings.ca.gov](http://WWW.P65Warnings.ca.gov).

Specifications: UL listed 510, CSA Approved

### Technical Specs

Backing: Vinyl Film	Adhesive: Rubber Based
Total Thickness: 7.0 mils	Tensile Strength: 20 lbs. per inch
Elongation: 200%	Adhesion to steel: 11.7 oz. to 14.3 oz. per inch

## Pro® P-28 Boxed Electrical Tape



Pro® P-28 is an individually boxed vinyl plastic insulating tape. Pro® P-28 is typically used in insulating wire splices, harness wrapping and general industrial maintenance.

**WARNING:** This product can expose you to chemicals including Diisononyl phthalate (DINP), which is known to the State of California to cause cancer, and Di-isodecyl phthalate (DIDP), which is known to the State of California to cause birth defects or other reproductive harm. For more information go to [WWW.P65Warnings.ca.gov](http://WWW.P65Warnings.ca.gov).

Specifications: UL listed 510, CSA Approved

### Technical Specs

Backing: Vinyl Film	Adhesive: Rubber Based
Total Thickness: 7.0 mils	Tensile Strength: 20 lbs. per inch
Elongation: 200%	Adhesion to steel: 11.7 - 14.3 oz. per inch

## Pro® PTFE Teflon Pipe Thread Seal Tape



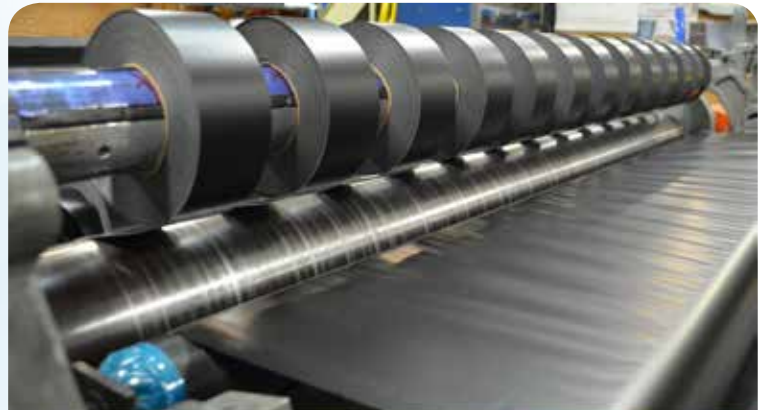
Blue Spool White Cover

Pro® PTFE Teflon Tape is a 3.5mil White 100% unsintered virgin PTFE (Polytetrafluoroethylene) pipe thread seal tape. Pro® PTFE Teflon Tape non-stick film is used to lubricate a wide variety of joints, making them easy to assemble for leak proof seals. Pro® PTFE Teflon Tape is used for all industrial applications including water, oil, gas, most chemicals, hydraulic and high pressure lines.

Colors: Specifications: MIL Spec T-27730A & UL31 RO

### Technical Specs

Backing: 100% Virgin PTFE	Total Thickness: 3.5 mils
Temperature Range: -450°F to 500°F	Tensile Strength: > 1,160 psi
Elongation: >50%	Adhesion to steel: 57 oz. per inch





## Pro® 48 Safety Stripes

### Vinyl Safety Stripes Tape



Black and Yellow

Pro® Safety Stripes is a soft PVC vinyl with excellent resistance to acids, alkalines, bacteria, corrosion and oils. Pro® Safety Stripes Tape is used for lane and floor marking. Pro® Safety Stripes is used for striping, warning, and marking of hazardous areas and exits to comply with OSHA requirements per paragraph 1910.144 of the Federal Register.

**WARNING:** This product can expose you to chemicals including Diisononyl phthalate (DINP), which is known to the State of California to cause cancer, and Di-isodecyl phthalate (DIDP), which is known to the State of California to cause birth defects or other reproductive harm. For more information go to [WWW.P65Warnings.ca.gov](http://WWW.P65Warnings.ca.gov).

Specifications: Satisfies all OSHA requirements per paragraph 1910.144 of the Federal Register.

#### Technical Specs

Backing: PVC	Adhesive: Rubber
Total Thickness: 6.0 mils	Temperature Range: up to 176°F
Tensile Strength: 18 lbs. per inch	Elongation: 150%
Adhesion to steel: 50 oz. per inch	

## Pro® HD Safety Stripes

### Vinyl Lane Marking Tape



Black and Yellow Stripes

Pro® HD Safety Stripes is a heavy duty, premium grade plasticized PVC film coated with a rubber resin adhesive. Pro® HD Safety Stripes totals 7 mils in thickness that includes a 2.7 mil BOPP film built to last five times longer than regular tape. Pro® HD Safety Stripes has an excellent resistance to acids, alkaline, bacteria, corrosion and oils. Pro® HD Safety Stripes is used for lane and floor marking. Pro® HD Safety Stripes is used for striping, warning, and marking of hazardous areas and exits to comply with OSHA requirements.

**WARNING:** This product can expose you to chemicals including Diisononyl phthalate (DINP), which is known to the State of California to cause cancer, and Di-isodecyl phthalate (DIDP), which is known to the State of California to cause birth defects or other reproductive harm. For more information go to [WWW.P65Warnings.ca.gov](http://WWW.P65Warnings.ca.gov).

Specifications: Satisfies and exceeds all OSHA requirements

#### Technical Specs

Adhesive: Synthetic Rubber	Total Thickness: 7 mils
Temperature Range: Up to 140°F	Tensile Strength: 18 lbs. per inch
Elongation: 150%	Adhesion to steel: 22 oz. per inch

## Pro® 50

### Premium Vinyl Tape



Pro Splice is a premium vinyl tape designed for safety marking, color coding, and dance floor splicing. Product is highly conformable to all surfaces along with being abrasion resistant.

**WARNING:** This product can expose you to chemicals including Diisononyl phthalate (DINP), which is known to the State of California to cause cancer, and Di-isodecyl phthalate (DIDP), which is known to the State of California to cause birth defects or other reproductive harm. For more information go to [WWW.P65Warnings.ca.gov](http://WWW.P65Warnings.ca.gov).

Specifications: Satisfies all O.S.H.A marking requirements. PPP-T-66D, Type 1

#### Technical Specs

Backing: PVC	Adhesive: Natural Rubber Resin
Total Thickness: 5 mils (+/- 1 mil)	Temperature Range: up to 176°F
Tensile Strength: 18lbs. per inch	Elongation: 180%
Adhesion to steel: 12.6 oz. per inch	

## Pro® Lite 36

### Reflective Film Tape



Pro® Lite reflective vinyls are economical, enclosed lens, retro-reflective films which meet or exceed the applicable requirements of Federal Specifications L-S300C (reflectivity 3). Pro® Lite films have been designed for short-term advertising/promotion, bumper stickers, vehicle emblems and a variety of decorative striping applications.

Specifications: Reflective intensity- meets or exceeds L-S300C, table IV reflectivity 3

#### Technical Specs

Adhesive: Acrylic	Temperature Range: -40°F to 180°F
-------------------	-----------------------------------

## Pro® Caution Ribbon

Non-Adhesive



Yellow Printed Black

Pro® Caution Ribbon is a 3 mil polyethylene non-adhesive tape used to limit entry to hazardous or restricted areas. Pro® Caution Ribbon is ideal for crime and fire scenes, construction sites, roadwork areas, sporting venues and any place where crowd control is required.

### Technical Specs

Adhesive: Non-adhesive	Total Thickness: 3.0 mils
Elongation: 400%	

## Pro® 15

Non-Skid Grit Tape



Black

Pro® 15 is a commercial grade non-skid silicon carbide grit tape that has been designed to meet OSHA standards for general purpose anti-slip surface applications. Designed for indoor and outdoor applications that require long term anchorage to a wide variety of surfaces. Farm Machinery, Construction equipment, fork lifts, cherry pickers, steps, stairs, platforms, snowmobiles, ATV's, garden tractors, lawn mowers, wet & oily areas, loading docks, cold storage, catwalks, ramps, ladders, step stools, scaffolds, airline decks, cargo holds, trains, semi-trailers, buses, ship decks, water ski's, surf boards, jet ski's boats, conveyors, pulleys, food service area, machine shops, garages, auto repair shops.

Specifications: Meets OSHA Standards, NFSI certified for High Traction

### Technical Specs

**Made in the USA**

Adhesive: Permanent Acrylic	Temperature Range: -20°F to 150°F
-----------------------------	-----------------------------------

## Pro® 17

Vinyl Anti-Skid Tape



Black

Clear

White

Sandstone

Pro® 17 is an embossed anti-slip PVC that has been engineered with an aggressive adhesive system to adhere to a wide variety of surfaces. Available colors are clear, white and sandstone. Pro® 17 is designed for indoor non-skid applications that require long term anchorage to a wide variety of flat surfaces. It has been successfully used in applications such as showers and tubs.

Specifications: Meets OSHA Standards

### Technical Specs

**Made in the USA**

Adhesive: Permanent Acrylic	Adhesion to steel: 57 oz. per inch
Tack (PASTC-6): Rolling Ball Tack (< 5 in)	Adhesive Thickness: 18.0 mils
Backing Thickness: 2.0 mils	Liner Thickness: 7.0 mils

## Pro® Grit Safety Stripes

Non-Skid Grit Tape



Black and Yellow  
Glow Stripes

Pro® Grit Safety Stripes is a black/yellow striped safety grade aluminum oxide non-slip tape. Meets OSHA standards for general purpose anti-slip surface applications. It is designed for indoor and outdoor non-skid applications that require long term anchorage to a wide variety of surfaces. It has been successfully used in a wide range of markets including OEM, Action Sports and Building Safety. It is NFSI certified for "high traction" use.

Specifications: Meets OSHA standards for general purpose anti-slip surface applications. It is NFSI certified for "high traction" use.

### Technical Specs

Backing: 24 mils	Adhesive: 2 mils
Total Thickness: 32 mils	



# Pro Glow®

Pro Glow® has a non-radioactive chemical light source incorporated into a flexible vinyl film that glows in total darkness after exposure to artificial or natural light. The photoluminescent film light source is designed to absorb energy from any nearby ambient light such as fluorescent lamps or sunlight. Once the source of extraneous light is removed, Pro Glow® film immediately emits a light of its own. There is no limit to the number of times this product can be recharged. When fully charged, Pro Glow® provides positive luminance for up to 10 hours. Pro Glow® is designed for indoor safety and egress marking tapes and signage.

Specifications: Exceeds PSPA Class B standards

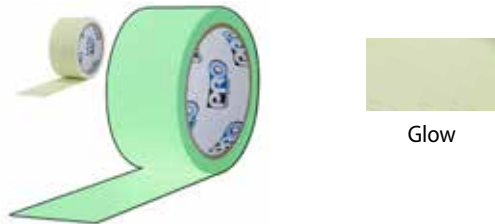
### Technical Specs

**Made in the USA**

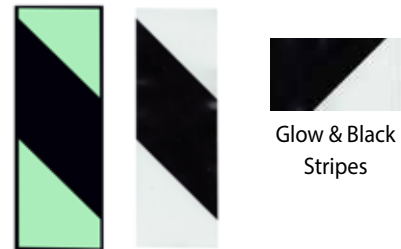
Backing: Vinyl Film	Total Thickness: 15.0 mils
Temperature Range: -20°F to 220°F	Adhesion to steel: 96 oz. per inch

### Pro Glow® Glow-In-The-Dark Tape

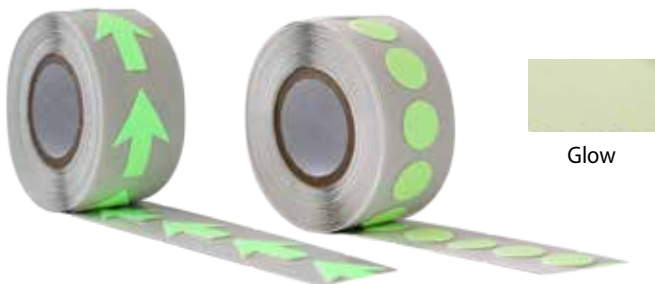
*Glow in the Dark Vinyl*



### Pro® Glow Stripes Lane Marking Tape



### Pro Glow® Arrows, Dots, & Corners



### Pro Glow® Grit Non-Skid Grit Tape



## Pro® Fast Hook & Loop Tape



White

Black

Pro® Fast is a high performance hot melt pressure sensitive adhesive having an excellent quick stick, peel adhesion to a wide variety of substrates. Pro® Fast performs well at both high and low temperatures. Pro® Fast has a straw-colored hot melt adhesive.

### Technical Specs

Loop Tack: 7 ounces	Soft (500 g/sq. in): 180°F
180 Peel Strength: 7 pli	Application Temperature: 40°F to 140°F
Performance Range: 0°F to 160°F	

## Pro® Sheen Metalized Film Tape



Pro® Sheen is a premium grade metalized polyester film in seven vibrant colors. Common applications include decorating, color-coding, cueing, and splicing.

Specifications: Meets Federal specifications #LT-100B Type II.

### Technical Specs

Backing: Metalized Polyester	Adhesive: Acrylic
Total Thickness: 2.1 mils	Temperature Range: Up to 300°F
Tensile Strength: 24 lbs. per inch	Elongation: 100%
Peel Strength: 45 oz. per inch	

## Pro® Rollerwrap 1000 Non-Slip Tape



Black

Pro® Rollerwrap 1000 Non-slip Tape is a silicone rubber coated cloth tape with a solvent based rubber adhesive system. Pro® Rollerwrap 1000 Non-slip Tape is used for roll covering in web processing applications.

### Technical Specs

Backing: Silicone-Coated Cloth	Adhesive: Solvent Based Rubber
Liner: Kraft Paper Liner	Color: Black
Peel Adhesion: 19.8 oz. per inch	





### Pro® Measurement Printed Ruler Paper Tape



Imperial - Yellow  
Printed Black



Metric - Yellow  
Printed Black

Pro® Measurement Tape is a premium kraft paper tape used as an adhesive backed, repositionable ruler. Pro® Measurement Tape removes clean and is available in two print options: metric and imperial. Metric is perforated every 20 centimeters. Imperial is perforated every 12" (ruler). This product is great for tough situations where you can't hold a tape measure.

#### Technical Specs

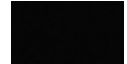
Made in the USA

Backing: Flat-Back Paper	Adhesive: Synthetic Rubber
Total Thickness: 5.8 mils	Temperature Range: 40°F to 150°F
Tensile Strength: 30 lbs. per inch	Elongation: 2.5%
Adhesion to steel: 57 oz. per inch	

### Cable Path® Zone Coated Gaffers Tape



Yellow



Black



Yellow Printed Black



Yellow Safety Stripes

Cable Path® is a premium vinyl coated cloth tape that is coated on both edges with a premium cured rubber adhesive system. The center portion has a smooth surface for pulling cable and wire through. The high performance adhesive will hold firmly for extended periods of time on most surfaces and remove without residue. The center portion has a smooth surface for pulling cable and wire through.

#### Technical Specs

Made in the USA

Backing: Premium Cotton Weave	Adhesive: Synthetic Rubber
Total Thickness: 11 mils	Temperature Range: 50°F to 180°F
Tensile Strength: 50 lbs. per inch	Elongation: 4%
Adhesion to steel: 75 oz. per inch	



## Specialty Services

### **Flexo Printing**

- Up to 3 colors, repeats up to one meter, [39.37"].
- Substrate can be one color plus three color print (4 color).
- Ability to print & die-cut inline one pass.
- Web width up to 300mm.
- 1", 1 1/2" and 3" ID finished roll core capability.

### **Flatbed Die-cutting**

- Can process thicker and larger parts
- Processing of thicker Volara® foams for medical use
- 12" x 12" die dimensions / Steel rule tooling

### **Rotary Die-cutting**

- Repeats lengths from 6" up to 39.37"
- Can be processed in roll form or individual parts for more efficient customer use
- Faster processing, more cost effective.
- Parts and liners can be printed as well as die-cut.
- Laminate up to 4 materials inline and multi-layer cut.
- Web widths up to 300mm.
- Waste/scrap ejection.
- Solid dies, flexible dies, floating dies, vacuum and air ejection.

### **Laminating**

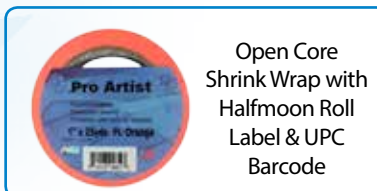
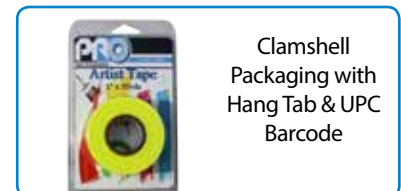
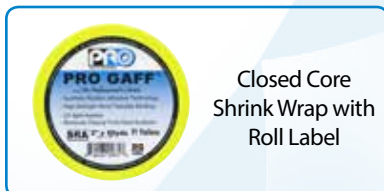
- Wide web laminating up to three substrates 1800mm wide with full capabilities to slit or log finished product inline.
- Narrow web laminating up to five substrates 300mm wide with full capabilities to slit, die cut or print product inline.
- Capable of adding adhesive or release liners to a wide range of substrates up to 6mm in thickness.

### **Packaging & Finishing Solutions:**

- Fully automatic in-line roll wrapping
- Clear & printed sleeve wrapping
- Open and closed core shrink wrapping
- PSA roll labeling, in line
- Robotic case packing
- Bulk pack with silicone
- Poly and zip lock bagging
- Sleeve, single tower and accordion style wrapping
- Blister and clam shell display packs
- Core labeling sticker
- Private label branding
- In house design and support
- Custom designs: core, boxes, sleeves, shrink wrap, roll label
- Custom packaging configurations available
- Retail ready packaging

### **Compliances, Certifications & Specifications**

- FDA Registered #3012336447
- GS1 Registered (UPC Barcoding)
- IMDS (Material System Data) Registered
- ISO 9001 Certified
- EDI Compliant
- QC Documentation Available
- Military Specifications
- Government Specifications
- Contract Bids





Tapes & Specialties

## Why Partner with Pro Tapes®?



### 1 WE'VE INVESTED TO BE CUTTING EDGE

We've made substantial investments in fully-automated technology to be a leader in the converting and packaging of pressure sensitive adhesives.

### 2 YOUR GLOBAL SOLUTIONS PROVIDER

We have a solution for all your tape needs, such as advanced converting services, new product development, custom die cutting, product finishing or packaging configurations and procurement or inventory management.

### 3 TECHNICAL SUPPORT FROM AN EXPERIENCED STAFF

Our product specialists are the most knowledgeable in the industry and can assist in application support and strategize on how to improve product quality and performance.

### 4 HELD TO THE HIGHEST STANDARDS

We follow all industry best practices and are certified in ISO 9001 Standards, FDA Registered, GS1 Registered, IMDS Registered and EDI Compliant.

## INDUSTRIES SERVED

POP Display & Signage • OEM • Assembly • Construction • Electrical • Aerospace  
Tradeshows & Convention Centers • Asbestos Abatement • Automotive Gasketing  
Medical • Marine • Watch repair, Jewelry Polishing • Janitorial & Maintenance Supplies

Pro Tapes & Specialties Inc.®  
621 Route 1 South  
North Brunswick, NJ 08902

Toll Free: (800) 345-0234  
Email: [sales@protapes.com](mailto:sales@protapes.com)  
[www.protapes.com](http://www.protapes.com)