

PRO® 700 Tamper Evident Tape



Technical Data Sheet

Pro® 700 Tamper Evident Tape is specifically designed to leave behind a hidden “OPENED” message when peeled away by unwanted parties.

Features & Benefits:

Colors: Red

Pilfer proof tape designed to let a consignee know if the package has been tampered with

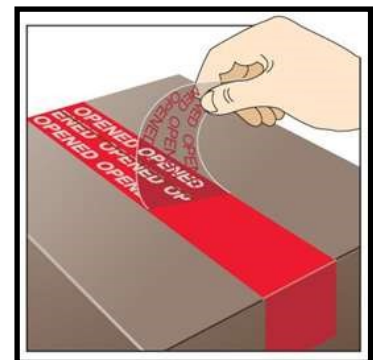
“Custom-printed” (Company name/logos) top surface version available

“Non-printed” top surface version available

Outstanding holding power

Technical Data

- ⇒ Backing: 1 mil Polyester
- ⇒ Adhesive: Aggressive hot melt
- ⇒ Size: 2”x60yds
- ⇒ Core: 3” I.D. Core
- ⇒ Case pack: 36 rolls
- ⇒ Dispensing: Tape gun or by hand
- ⇒ Application Temperature: 32°F to 120°F
- ⇒ Recommended storage conditions: 60°F to 80°F, 40-60% Humidity



Application:

Pro® 700 Tamper Evident Tape is formulated to seal a variety of surfaces such as paper and plastic security envelope flaps as well as corrugated packages and boxes. Pro® 700 Tamper Evident Tape is widely used by the electronics, aviation, trucking, medical/pharmaceutical and jewelry industries.

ISO 9001
Certified



621 Route One South. North Brunswick, NJ 08902

Toll Free #1-800-345-0234

sales@protapes.com

Note: The above are typical values and should not be used in writing specifications. The determination of the suitability of this product for any specific use is solely the responsibility of the user. No representatives, guarantees or warranties of any kind are made to the accuracy or suitability for specific applications.